

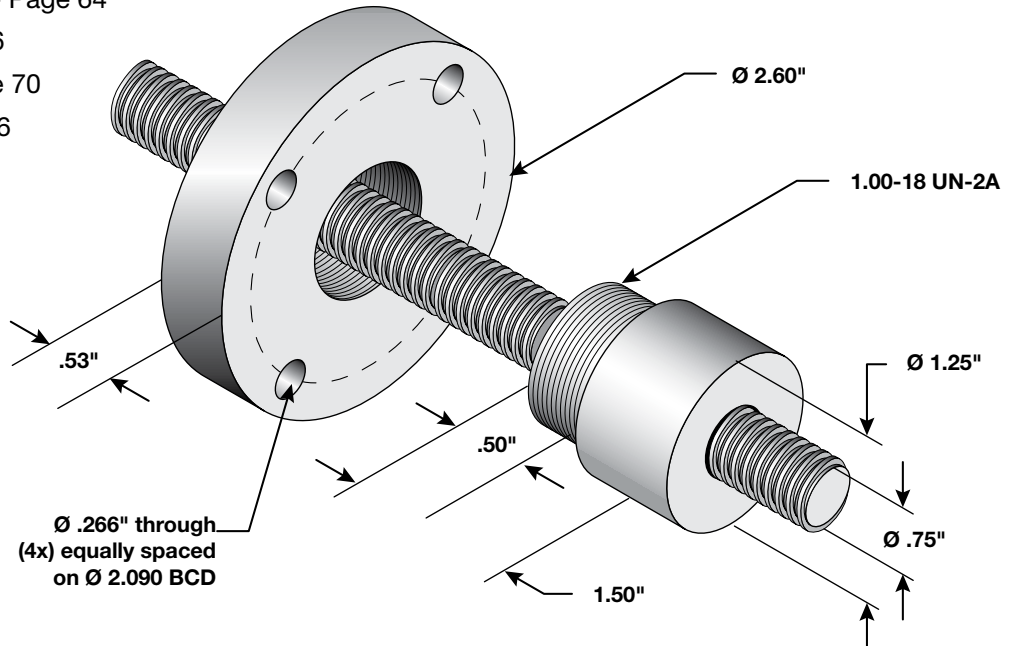
ACME

SCREWS & NUTS

3/4 Inch (.750 Inch) - Left Hand

Duff-Norton offers complete close mounted systems to complement these screw & nut assemblies as follows:

- Screw Journal Ends - Page 64
- End Blocks - Page 66
- Motor Flanges - Page 70
- Gearmotors - Page 76
- Controls - Page 96



Acme Screw & Nut 3/4 Inch (.750 Inch) Diameter - Left Hand

Acme Screw	Screw Dia.	Lead	Pitch	No. Starts	Root Dia.	Thread Form	Material	Maximum Backlash	Standard Lengths		
									36 Inch	72 Inch	144 Inch
075ASA010L	.75	.100	.100	1	0.608	Centralizing LH	Steel	0.010	Yes	Yes	Yes
Acme Nut	*Static Load	*Dynamic Load	*Max. Speed	T.P.I.	Efficiency	Torque to Raise 1 Lb. (in/lb)	Material	Mounting Thread	Mounting Length	Nut Length	Nut Diameter
075ANB010L	17,005	5,275	172.50	10	25%	0.062	Bronze	1.00-18 UNS-2A	.50	1.50	1.25
Flange	Overall Dia.	Bolt Cir. Dia.	Bolt Hole Dia.	Mounting Holes	Flange Width	Treated	Material	Mounting Thread			
FL1000	2.60	2.090	.266	4	.53	Black Oxide	Steel	1.00-18 UNS-2B			

Note: Unless otherwise specified, all capacities are in Pounds, all dimensions are in Inches, and all speeds are in Inches per Minute.

*Load ratings are based on what the screw & nut assembly is capable of achieving. Actual load performance for a given screw and nut assembly will vary from application to application.

*Speed ratings are based on a directly coupled screw & motor turning at 1725 rpm. Actual speeds for a given screw and nut assembly will vary from application to application.

In many cases Duff-Norton can provide screw materials such as 316SS, longer screw lengths, or thread directions other than what has been cataloged.

Please contact our customer service department for assistance.



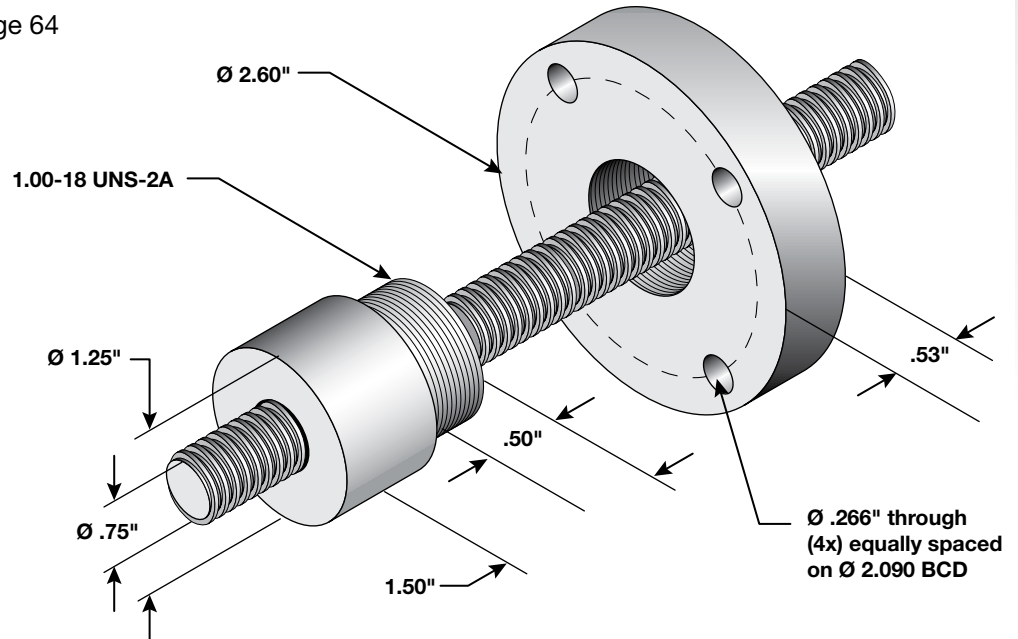
1/2 inch to 1-1/2 inch
bronze and plastic nuts
available in select T.P.I

ACME SCREWS & NUTS

3/4 Inch (.750 Inch) - Right Hand

Duff-Norton offers complete close mounted systems to complement these screw & nut assemblies as follows:

- Screw Journal Ends - Page 64
- End Blocks - Page 66
- Motor Flanges - Page 70
- Gearmotors - Page 76
- Controls - Page 96



Acme Screw & Nut 3/4 Inch (.750 Inch) Diameter - Right Hand

Acme Screw	Screw Dia.	Lead	Pitch	No. Starts	Root Dia.	Thread Form	Material	Maximum Backlash	Standard Lengths		
									36 Inch	60 Inch	72 Inch
075ASA010	.75	.100	.100	1	0.608	Centralizing RH	Steel	0.010	Yes	Yes	—
075ASA020R		.200	.200		0.517			0.009			Yes
075ASA025		.250	.250	0.450	0.012			—			
075ASA050		.500	.250					2			
Acme Nut	*Static Load	*Dynamic Load	*Max. Speed	T.P.I.	Efficiency	Torque to Raise 1 Lb.	Material	Mounting Thread	Mounting Length	Nut Length	Nut Diameter
075ANB010	17,005	5,275	172.50	10	25%	0.062	Bronze	1.00-18 UNS-2A	.50	1.50	1.25
075ANB020	17,410	4,935	345.00	5	42%	0.076					
075ANB025	17,521	4,747	431.25	4	48%	0.083					
075ANB050	15,919	4,776	862.50	2	63%	0.125					
075ANP025	1,652	1,652	431.25	4	59%	0.067	Plastic				
075ANP050	1,640	1,501	862.50	2	73%	0.109					
Flange	Overall Dia.	Bolt Cir. Dia.	Bolt Hole Dia.	Mounting Holes	Flange Width	Treated	Material	Mounting Thread			
FL1000	2.60	2.090	.266	4	.53	Black Oxide	Steel	1.00-18 UNS-2B			

Note: Unless otherwise specified, all capacities are in Pounds, all dimensions are in Inches, and all speeds are in Inches per Minute.

*Load ratings are based on what the screw & nut assembly is capable of achieving. Actual load performance for a given screw and nut assembly will vary from application to application.

*Speed ratings are based on a directly coupled screw & motor turning at 1725 rpm. Actual speeds for a given screw and nut assembly will vary from application to application.

In many cases Duff-Norton can provide screw materials such as 316SS, longer screw lengths, or thread directions other than what has been cataloged.

Please contact our customer service department for assistance.



1/2 inch to 1-1/2 inch bronze and plastic nuts available in select T.P.I