

SCREW JACK POWERED ACTUATORS C-FACE MOTOR DRIVEN

Performance Specifications															
Actuator Capacity	Worm Gear Ratio	Lifting Speed (in/min)		Lifting Capacity (lbs)											
				Motor Horsepower						Motor RPM					
		1/2	1/2	3/4	3/4	1	1	1-1/2	1-1/2	2	2	3	5		
		1725	1140	1725	1140	1725	1140	1725	1140	1725	1140	1725	1140	1725	1725
2 Ton MS	6:1	71.9	47.5	450	770	760	1240	1070	1710	1700	2660	2330	3600	—	—
	12:1	35.9	23.8	740	1260	1250	2040	—	—	—	—	—	—	—	—
	24:1	18.0	11.9	1150	1970	—	—	—	—	—	—	—	—	—	—
	25:1	17.3	11.4	1200	2060	2040	3320	—	—	—	—	—	—	—	—
3 Ton MS	6:1	71.9	47.5	480	830	820	1340	1160	1840	1830	2860	2510	3880	—	—
	12:1	35.9	23.8	780	1320	1320	2140	1860	2950	—	—	—	—	—	—
	24:1	18.0	11.9	1110	1890	1880	3060	—	—	—	—	—	—	—	—
	25:1	17.3	11.4	1160	1980	1970	3200	2770	4410	—	—	—	—	—	—
5 Ton MS	6:1	107.8	71.3	—	390	380	690	590	1000	1000	1620	1400	2240	2220	—
	12:1	53.9	35.6	300	640	640	1160	980	1670	1660	2690	2340	3720	—	—
	24:1	27.0	17.8	450	980	970	1750	—	—	—	—	—	—	—	—
	25:1	17.3	11.4	480	1040	1030	1860	—	—	—	—	—	—	—	—
10 Ton MS	8:1	107.8	71.3	—	190	190	560	430	940	930	1680	1420	2420	2410	4360
	24:1	35.9	23.8	—	370	360	1090	840	1800	1790	3230	—	—	—	—
	25:1	17.3	11.4	—	400	400	1180	910	1960	1940	3510	—	—	—	—
	8:1	107.8	71.3	—	150	140	440	340	730	720	1300	1100	1880	1870	3400
15 Ton MS	24:1	35.9	23.8	—	260	260	770	600	1280	1270	2300	—	—	—	—
	25:1	17.3	11.4	—	340	330	1000	770	1660	1640	2970	—	—	—	—
	8:1	107.8	71.3	—	—	—	240	130	540	530	1150	940	1760	1750	3370
	24:1	35.9	23.8	—	—	—	420	230	960	950	2040	—	—	—	—
20 Ton MS	25:1	17.3	11.4	—	—	—	480	260	1080	1070	2300	—	—	—	—
	10-2/3:1	107.7	71.2	—	—	—	—	—	320	320	950	730	1570	1560	3210
	32:1	17.3	11.4	—	—	—	—	—	520	510	1520	1170	2520	—	—
	32:1	13.5	8.9	—	—	—	—	—	490	480	1420	1090	2350	—	—
35 Ton MS	10-2/3:1	107.7	71.2	—	—	—	—	—	—	—	550	390	1030	1020	2300
	32:1	35.9	23.7	—	—	—	—	—	—	—	930	650	1740	—	—
	32:1	17.3	11.4	—	—	—	—	—	—	—	1100	760	2050	—	—
	6:1	71.9	47.5	1270	2050	2040	3210	2800	4360	4340	6680	5870	9880	—	—
2 Ton BS	24:1	18.0	11.9	2720	4390	—	—	—	—	—	—	—	—	—	—
	12:1	35.9	23.8	2220	3580	3550	—	—	—	—	—	—	—	—	—
	6:1	287.5	190.0	180	400	400	720	610	1040	1030	1680	1450	2320	—	—
	24:1	71.9	47.5	450	980	—	—	—	—	—	—	—	—	—	—
2 Ton BS High Lead	12:1	143.8	95.0	320	680	680	1220	—	—	—	—	—	—	—	—
	6:1	118.7	78.5	740	1260	1250	2040	1770	2810	2800	4370	3830	5920	—	—
	24:1	71.9	47.5	1730	2950	—	—	—	—	—	—	—	—	—	—
	12:1	59.4	39.2	1230	2110	—	—	—	—	—	—	—	—	—	—
5 Ton BS	6:1	136.0	89.9	380	810	810	1460	1230	2110	2090	3400	2950	4690	4660	—
	24:1	34.0	22.5	1000	2140	2120	3840	—	—	—	—	—	—	—	—
	12:1	68.0	44.9	590	1270	1260	2270	1920	3280	3260	5290	4590	7300	—	—
	6:1	287.5	190.0	—	140	140	430	330	710	700	1280	1080	1840	1830	—
5 Ton BS High Lead	24:1	71.9	47.5	—	380	370	1110	—	—	—	—	—	—	—	—
	12:1	143.8	95.0	—	250	250	740	570	1220	1210	2190	1850	3160	—	—
	8:1	102.0	67.4	170	720	710	1530	1250	2340	2350	4050	3450	5700	5600	10000
	24:1	34.0	22.5	370	1520	1500	3210	2620	4910	4950	8450	—	—	—	—
10 Ton BS	8:1	215.6	142.5	—	180	170	530	410	880	870	1570	1330	2270	2250	4100
	24:1	71.9	47.5	—	370	360	1090	840	1800	1790	3230	—	—	—	—
	8:1	107.8	71.3	—	—	—	40	—	860	850	2600	2000	4250	4200	8600
	24:1	35.9	23.8	—	—	—	100	—	2010	2050	6000	—	—	—	—
20 Ton BS	8:1	215.6	142.5	—	—	—	—	—	130	120	950	660	1770	1750	3920
	24:1	71.9	47.5	—	—	—	—	—	300	1000	2900	—	—	—	—
	10-2/3:1	106.7	70.5	—	—	—	40	—	800	790	2340	1800	3970	3840	7910
	32:1	35.6	23.5	—	—	—	80	—	1640	1610	4760	3680	7890	—	—
7511	6:1	118.7	78.5	650	1100	1100	1780	1550	2460	2450	3820	3350	5180	—	—
7515	8:1	102.0	67.4	500	1080	1070	1940	1640	2790	2780	4510	3910	6230	6190	10740
75151 HL	8:1	215.6	142.5	—	90	80	260	200	430	430	780	660	1130	1120	2040
7522	10-2/3:1	80.9	53.4	—	—	—	50	—	1010	990	2940	2270	4870	4830	9950
75221 HL	10-2/3:1	161.7	106.9	—	—	—	—	—	70	70	540	380	1020	1010	2260

FEATURES

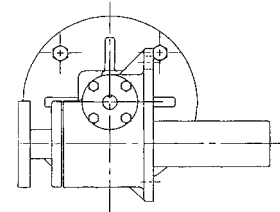
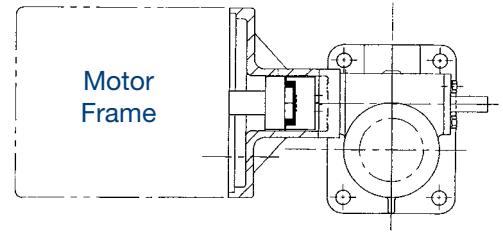
- Available for 2-35 Ton machine, 2-25 Ton ball screw, and all 7500 Series continuous duty cycle actuators.
- Designed with Standard NEMA C-face dimensions.
- Allows direct coupling of motor shaft with either the left or right side actuator input shaft.
- Comes with coupling, keys, and mounting hardware.

Motor Frame Sizes		
Motor HP	Motor RPM	
	1725	1140
1/2	56C	56C
3/4	56C, 143C	56C, 143C
1	56C, 143C	56C, 143C
1-1/2	56C, 143C	182C
2	56C, 143C	184C
3	—	182C
5	—	182C

SCREW JACK POWERED ACTUATORS C-FACE MOTOR DRIVEN

Please provide the following information when ordering:

- Actuator model
- Translating or rotating screw
- Upright or inverted configuration
- Type of screw end (translating screw actuators)
- Worm gear ratio
- Travel
- With or without boot
- With or without anti-backlash feature (machine screw actuators)
- Motor horsepower
- Motor frame size
- Left or right motor adaptor position
- Other special requirements



⚠ CAUTION

When direct coupling a motor to an actuator, it is necessary to match motor horsepower to actuator load. Lifting speeds and maximum actuator load capacities for actuators with various motor horsepower are shown in the table on the previous page. It is important that motors do not exceed the maximum horsepower shown.

⚠ CAUTION

All ball screw and high duty cycle actuators are self lowering and require motors with brakes. Standard ratio machine screw actuators are not always self locking and require motors with brakes. Optional ratio machine screw actuators are usually self-locking and do not require brakes. However, if self-locking is absolutely necessary, a motor brake or other restraining device should be considered.

Dimensions					
Capacity	A	B (+.001/-0.000)	C	D	E
2 Ton MS & BS, 3 Ton BS	56C	.625	6.75	6.16	.50
	143TC, 145TC	.875	6.75	6.16	.50
3 Ton MS	56C	.625	6.75	6.17	.50
	143TC, 145TC	.875	6.75	6.17	.50
5 Ton MS & BS	56C	.625	6.75	7.12	.62
	143TC, 145TC	.875	6.75	7.12	.62
	182TC, 184TC	1.125	9.00	7.95	1.45
10 Ton MS & BS	56C	.625	6.75	8.13	.65
	143TC, 145TC	.875	6.75	8.13	.65
	182TC, 184TC	1.125	9.00	8.89	1.47
15 Ton MS	56C	.625	6.75	8.13	.70
	143TC, 145TC	.875	6.75	8.13	.70
	182TC, 184TC	1.125	9.00	8.97	1.54
20 Ton MS & BS	56C	.625	6.75	8.13	.65
	143TC, 145TC	.875	6.75	8.13	.65
	182TC, 184TC	1.125	9.00	8.97	1.49
25 & 30 Ton MS & BS	56C	.625	6.75	8.88	.74
	143TC, 145TC	.625	6.75	8.88	.74
	182TC, 184TC	1.125	9.00	9.63	1.49
35 Ton MS	56C	.625	6.75	8.88	.65
	143TC, 145TC	.875	6.75	8.88	.65
	182TC, 184TC	1.125	9.00	9.63	1.49
7511	56C	.625	6.75	6.98	.50
	143TC, 145TC	.875	6.75	6.98	.50
7515	56C	.625	6.75	8.06	.65
	143TC, 145TC	.875	6.75	8.06	.65
	182TC, 184TC	1.125	9.00	8.90	1.47
7522	56C	.625	6.75	9.62	.65
	143TC, 145TC	.875	6.75	9.62	.65
	182TC, 184TC	1.125	9.00	10.46	1.49