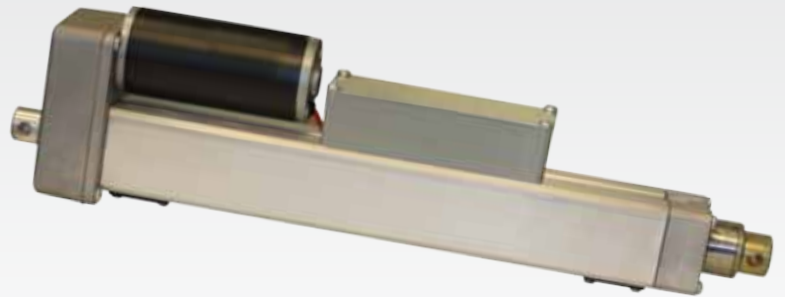


SERIES

TMD01

100 lbs (444 N)

VOLTAGE:	12 or 24 VDC
DESIGN:	Acme screw
TEMPERATURE RANGE:	-20°F to 120°F (-29°C to 50°C)
ENVIRONMENT:	IP50 protection standard



FEATURES & BENEFITS

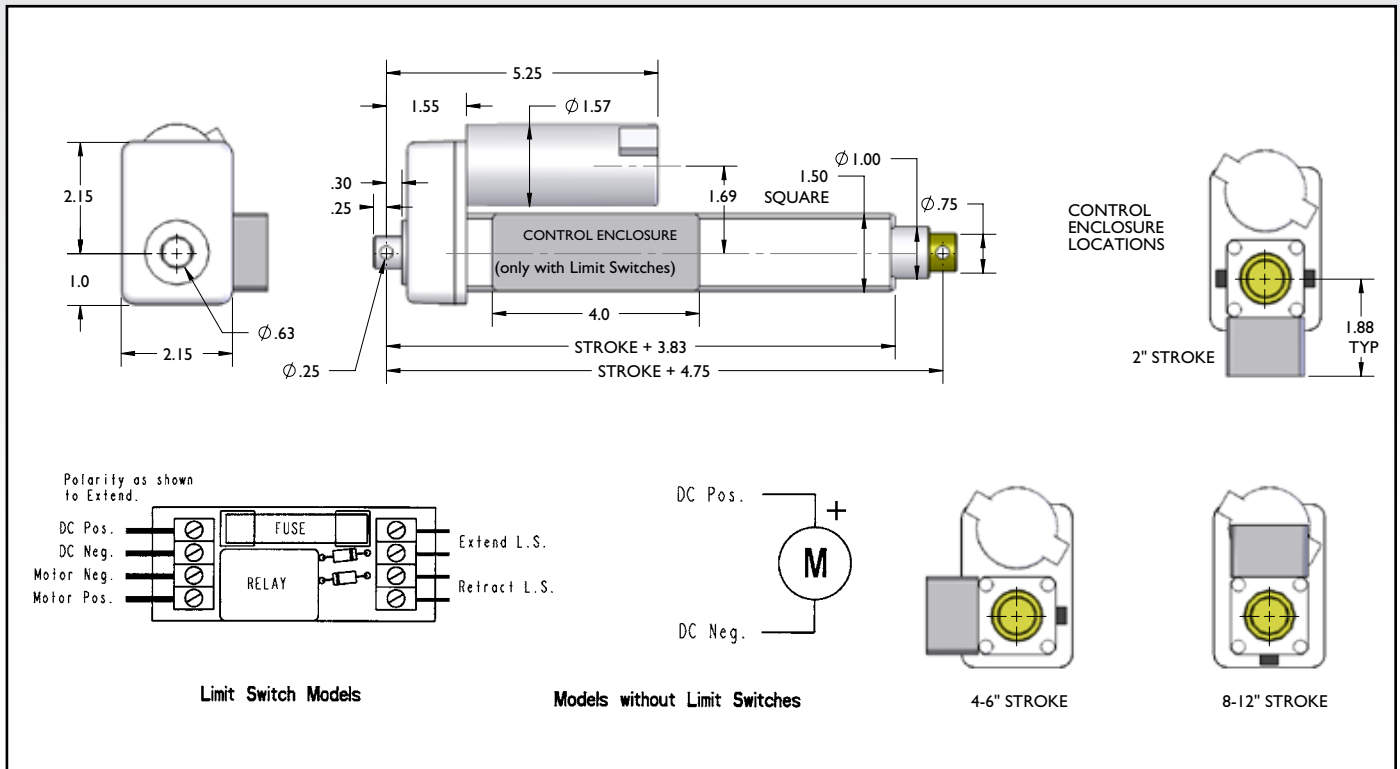
- Compact design
- Timing belt drive for quiet operation
- Aluminum housing and outer tube
- Low current draw
- Double clevis mounting
- Easy to wire terminal strip (limit switch models)
- Keyed translating tube
- Permanent magnet motors - no thermal overload protection

OPTIONS

- Adjustable limit switches - includes control enclosure with fuse
- Pulse generator for feedback (Add "PTD" prefix)



DIMENSIONS



PRODUCT INFORMATION

Part Number	Rated Load		Stroke Length		Retracted Length		Voltage	Current Draw at Rated Load (A)	Speed at Rated Load		Limit Switch	Duty Cycle at Rated Load	Shipping Weight	
	lbs	N	in	mm	in	mm			in/s	mm/s			lbs	kg
TMD01-1406-2	100	444	2	50	6.75	171	12 VDC	7	0.7	18	No Limit Switches	25%	4	1.8
TMD01-1406-4			4	101	8.75	222							4	1.8
TMD01-1406-6			6	152	10.75	273							5	2.3
TMD01-1406-8			8	203	12.75	323							5	2.3
TMD01-1406-10			10	254	14.75	374							5	2.3
TMD01-1406-12			12	304	16.75	425							5	2.3
TMD01-1906-2	100	444	2	50	6.75	171	12 VDC	7	0.7	18	Adjustable Limit Switches	25%	4	1.8
TMD01-1906-4			4	101	8.75	222							4	1.8
TMD01-1906-6			6	152	10.75	273							5	2.3
TMD01-1906-8			8	203	12.75	323							5	2.3
TMD01-1906-10			10	254	14.75	374							5	2.3
TMD01-1906-12			12	304	16.75	425							5	2.3
TMD01-2406-2	100	444	2	50	6.75	171	24 VDC	5	1	25	No Limit Switches	25%	4	1.8
TMD01-2406-4			4	101	8.75	222							4	1.8
TMD01-2406-6			6	152	10.75	273							5	2.3
TMD01-2406-8			8	203	12.75	323							5	2.3
TMD01-2406-10			10	254	14.75	374							5	2.3
TMD01-2406-12			12	304	16.75	425							5	2.3
TMD01-2906-2	100	444	2	50	6.75	171	24 VDC	5	1	25	Adjustable Limit Switches	25%	4	1.8
TMD01-2906-4			4	101	8.75	222							4	1.8
TMD01-2906-6			6	152	10.75	273							5	2.3
TMD01-2906-8			8	203	12.75	323							5	2.3
TMD01-2906-10			10	254	14.75	374							5	2.3
TMD01-2906-12			12	304	16.75	425							5	2.3

Note: For pulse generator models, use PTD model number prefix instead of TMD