

C -Face Motor Adaptor

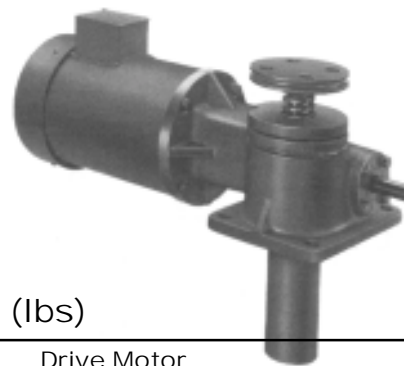
- Available for 2- to 20-ton machine, ball screw and high duty cycle actuators.
- Designed with standard NEMA C-face dimensions.
- Allows direct coupling of motor shaft with either the left or right side actuator input shaft.
- Comes with coupling keys and mounting hardware.

To direct couple a motor to an actuator, match motor horsepower to actuator load. Lifting speeds and maximum actuator load capacities for actuators with various motor horsepower are shown in the table below.

C-Face Motor Frame Sizes

Motor HP	Motor RPM	
	1725	1140
1/2	56C	56C
3/4	56C, 143TC	56C, 143TC
1	56C, 143TC	56C, 143TC
1 1/2	56C, 143TC	182TC
2	56C, 143TC	184TC
3	182TC	
5	184TC	

CAUTION: All ball screw and high duty cycle actuators are self-lowering and require motors with brakes. Standard ratio machine screw actuators are not always self-locking and require motors with brakes. Optional ratio machine screw actuators are usually self-locking and do not require brakes; however, if self-locking is absolutely necessary, a motor brake or other restraining device should be considered.



Maximum Actuator Load Capacity (lbs)

Model No.	Worm Gear Ratio	Lifting Speed (In/Min)						Drive Motor							
		@Motor RPM		1/2 HP		3/4 HP		1 HP		1 1/2 HP		2 HP		3HP	5HP
		1725 RPM	1140 RPM	1725 RPM	1140 RPM	1725 RPM	1140 RPM	1725 RPM	1140 RPM	1725 RPM	1140 RPM	1725 RPM	1140 RPM	1725 RPM	1725 RPM
1802	6:1	72.0	47.5	450	700	700	1150	1000	1650	1650	2550	2250	---	---	---
7002	24:1	18.0	12.0	1150	1850	---	---	---	---	---	---	---	---	---	---
9002	6:1	108.0	71.0	---	---	350	650	550	950	950	1550	1350	2150	2150	---
9005	24:1	27.0	18.0	450	900	900	1650	---	---	---	---	---	---	---	---
9010	8:1	108.0	71.0	---	---	---	---	400	900	900	1600	1350	2300	2300	4200
9010	24:1	36.0	24.0	---	---	300	1000	750	1700	1700	3100	---	---	---	---
9015	8:1	108.0	71.0	---	---	---	---	300	700	700	1250	1050	1800	1800	3250
9015	24:1	36.0	24.0	---	---	200	700	550	1200	1200	2200	---	---	---	---
9020	8:1	108.0	71.0	---	---	---	---	100	450	450	950	750	1450	1450	2850
9020	24:1	36.0	24.0	---	---	---	---	150	800	800	1700	---	---	---	---
2802	6:1	72.0	47.5	1250	1950	1950	3050	2800	4000	4000	---	---	---	---	---
7802	24:1	18.0	12.0	2700	4000	---	---	---	---	---	---	---	---	---	---
9802	6:1	288.0	190.0	150	350	350	650	550	1000	1000	1600	1400	---	---	---
28021	24:1	72.0	47.5	450	900	---	---	---	---	---	---	---	---	---	---
78021	6:1	119.0	78.0	700	1200	1200	1900	1700	2700	2700	4200	3700	---	---	---
98021	24:1	30.0	20.0	1700	2800	---	---	---	---	---	---	---	---	---	---
28003	6:1	136.0	90.0	350	750	750	1350	1150	2000	2000	3250	2850	4500	4500	---
98003	24:1	34.0	22.5	1000	2000	2000	3600	---	---	---	---	---	---	---	---
9805	6:1	288.0	190.0	---	---	100	350	300	650	650	1200	1000	1750	1750	---
9805	24:1	72.0	47.5	---	---	300	1000	---	---	---	---	---	---	---	---
98051	6:1	102.0	67.5	150	650	650	1400	1150	2250	2250	3800	3250	5350	5350	9550
98051	24:1	34.0	22.5	350	1350	1350	3000	2500	4750	4750	8000	---	---	---	---
9810	8:1	216.0	142.0	---	---	150	450	350	800	800	1500	1250	2150	2150	3950
9810	24:1	72.0	47.5	---	---	300	1000	750	1700	1700	3100	---	---	---	---
98101	8:1	108.0	71.0	---	---	---	---	---	---	750	2350	1800	3900	3900	8150
98101	24:1	36.0	24.0	---	---	---	---	---	---	1800	5450	---	---	---	---
9820	6:1	119.0	78.5	600	1050	1050	1700	1500	2350	2350	---	---	---	---	---
9820	24:1	102.0	67.5	150	700	700	1550	1250	2400	2400	4100	3550	5800	5800	10350
7511	8:1	81.0	53.5	---	---	---	---	---	850	850	2750	2100	4600	4600	9550
7515	10 2/3:1	81.0	53.5	---	---	---	---	---	---	---	---	---	---	---	---

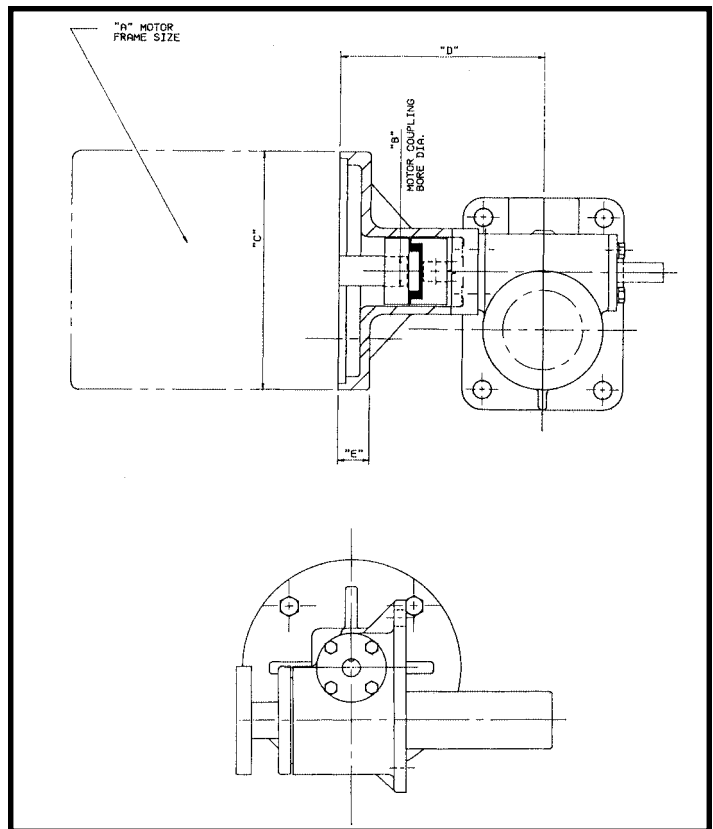
Ordering the Right C-Face Motor Adaptor

Please provide the following information when ordering:

- Actuator model
- Translating or rotating screw
- Upright or inverted configuration
- Type of screw end (translating screw actuators)
- Worm gear ratio
- Travel
- With or without boot
- With or without anti-backlash feature (machine screw actuators)
- Motor horsepower
- Motor frame size
- Left or right motor adaptor position
- Other special requirements

When direct coupling a motor to an actuator, it is necessary to match motor horsepower to actuator load. Lifting speeds and maximum actuator load capacities for actuators with various motor horsepower are shown in the table on the previous page. It is important that motors do not exceed the maximum horsepower shown.

CAUTION: All ball screw and high duty cycle actuators are self lowering and require motors with brakes. Standard ratio machine screw actuators are not always self locking and require motors with brakes. Optional ratio machine screw actuators are usually self-locking and do not require brakes; however, if self-locking is absolutely necessary, a motor brake or other restraining device should be considered.



Specifications

Model No.	"A"	"B" (+.001/-.000)	"C"	"D"	"E"
1802 / 2802	56C	.625	6.75	6.16	.50
	143TC; 145TC	.875	6.75	6.16	.50
7002, 7802, 9002 & 9802	56C	.625	6.75	6.16	.50
	143TC; 145TC	.875	6.75	6.16	.50
28021 & 28003	56C	.625	6.75	6.16	.50
	143TC; 145TC	.875	6.75	6.16	.50
78021, 98021 & 98003	56C	.625	6.75	6.16	.50
	143TC; 145TC	.875	6.75	6.16	.50
9005	56C	.625	6.75	7.12	.62
	143TC; 145TC	.875	6.75	7.12	.62
	182TC; 184TC	1.125	9.00	7.95	1.45
9805 & 98051	56C	.625	6.75	7.12	.62
	143TC; 145TC	.875	6.75	7.12	.62
	182TC; 184TC	1.125	9.00	7.95	1.45
9010	56C	.625	6.75	8.13	.65
	143TC; 145TC	.875	6.75	8.13	.65
	182TC; 184TC	1.125	9.00	8.97	1.47
9810 & 98101	56C	.625	6.75	8.13	.65
	143TC; 145TC	.875	6.75	8.13	.65
	182TC; 184TC	1.125	9.00	8.97	1.47
9015	56C	.625	6.75	8.13	.70
	143TC; 145TC	.875	6.75	8.13	.70
	182TC; 184TC	1.125	9.00	8.97	1.54
9020 & 9820	56C	.625	6.75	8.13	.65
	143TC; 145TC	.875	6.75	8.13	.65
	182TC; 184TC	1.125	9.00	8.97	1.49
7511	56C	.625	6.75	6.98	0.50
	143TC; 145TC	.875	6.75	6.98	0.50
7515	56C	.625	6.75	8.06	0.65
	143TC; 145TC	.875	6.75	8.06	0.65
	182TC; 184TC	1.125	9.00	8.9	1.47
7522	56C	.625	6.75	9.62	0.65
	143TC; 145TC	.875	6.75	9.62	0.65
	182TC; 184TC	1.125	9.00	10.46	1.49