



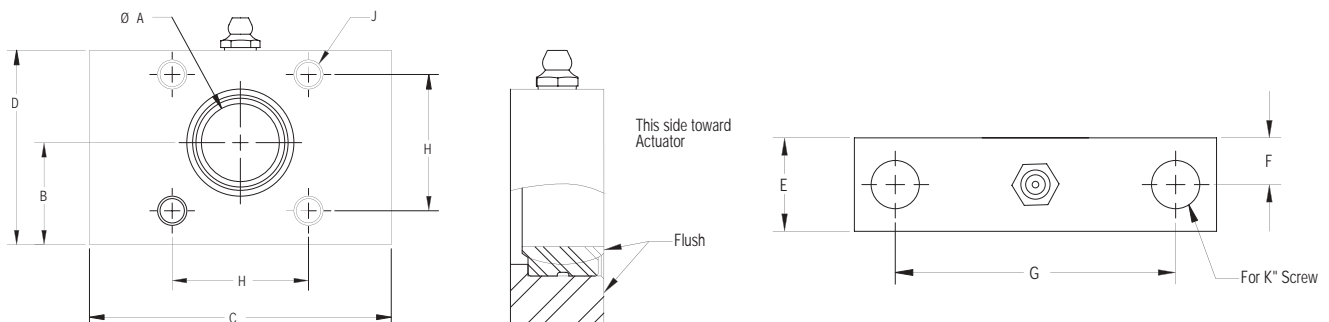
Duff-Norton SCN SuperCylinders are available with trunnion mounting only and are fitted with trunnion pins as standard. The SCN Series trunnion pins are designed to fit standard dimension radial spherical plain bearings (Torrington type SF, or SKF type GEZ, for example). Duff-Norton offers Trunnion Blocks to facilitate the installation of SCN series SuperCylinders. These blocks are solid steel and house properly sized spherical plain bearings. The blocks are drilled for mounting either as a conventional pillow blocks or as a flange units. Heat-treated fasteners should be used for all attachments.

If Duff-Norton Trunnion Blocks are not chosen for the SuperCylinder's installation, we strongly recommend that the trunnion pins be supported by some type of self-aligning bearing, as perfect alignment of trunnion support bearings is difficult to achieve. Standard pillow blocks are not recommended, as their maximum static load rating is usually less than that of the SuperCylinder. In addition, most pillow blocks use gray cast iron frames, which are subject to fracture under heavy loads.

Order trunnion blocks per the following chart:

SuperCylinder series	Mounting Blocks (2 req'd)
NZ03, NL03, NU03	Part No. NZ03-510
NZ06, NL06, NU06	Part No. NZ06-510
NZ12, NL12, NU12	Part No. NZ12-510
NZ25, NL25, NU25	Part No. NZ25-510

Trunnion Block Specifications



Capacity	Part #	A	B	C	D	E	F	G	H	J	K
3 Ton	NZ03-510	1.00	1.31	3.87	2.50	1.00	0.50	3.00	1.75	3/8"-16	1/2"
6 Ton	NZ06-510	1.25	1.56	4.50	3.00	1.12	0.56	3.50	2.00	1/2"-13	5/8"
12 Ton	NZ12-510	1.75	2.06	5.50	4.00	1.50	0.75	4.25	2.75	5/8"-11	3/4"
25 Ton	NZ25-510	2.25	2.56	7.50	5.00	2.00	1.00	5.50	3.25	3/4"-10	1-1/4"