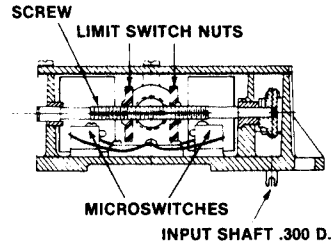




SKA-6000-A Rotary Limit Switch



Features

Standard on all Duff-Norton SCW Series SuperCylinders.

- Sturdy and compact. Constructed of corrosion-resistant materials, with housing of anodized aluminum. Meets NEMA-4 water tightness requirements.
- Lifetime lubricated.
- Can be mounted on right or left extension of actuator worm shaft. Switch already mounted in its optional position.
- Optional 4-position limit switch available. Consult factory for dimensions.
- Simple to adjust. Two microswitches, one for up/stop and one for down/stop, are activated by the adjustable limit-switch nuts which travel laterally when the internal screw is rotated through gear reduction.
- Can be used in applications where there is a need to limit the rotation of equipment that rotates and/or reverses.
- Operating temperature range -20° to + 150°F.

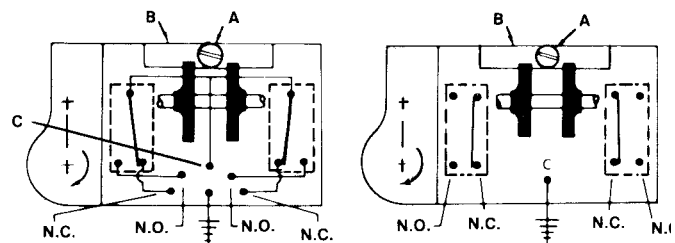
Electrical Specifications

Wiring Diagrams and Voltage

CAUTION: DISCONNECT POWER BEFORE MAKING ANY ADJUSTMENT

To Adjust Limit Switch Settings:

1. Check drift before adjusting limits.
2. Remove screw "A" and nut guide keeper "B" to adjust limits.
3. Run actuator unit to desired limit.
4. Rotate appropriate nut until switch clicks, then turn 1/2 turn more.
5. Replace "A" and "B."
6. Run actuator unit to other limit.
7. Repeat steps 2, 4 and 5 to adjust this nut.



Wiring Diagram "A" & "B" Models

Wiring Diagram "C" Model

N.O. = Normally Open
N.C. = Normally Closed