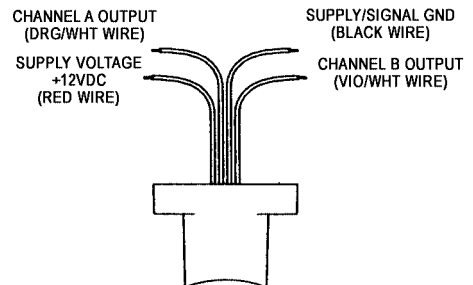
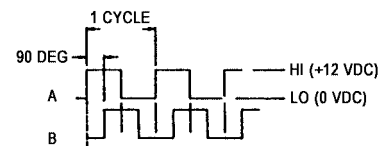


Factory installed ring kit encoder for SCW SuperCylinders. The encoder is mounted between the motor and adaptor or reducer. The actuator worm shaft opposite the encoder is free for driving another actuator or for a limit switch.

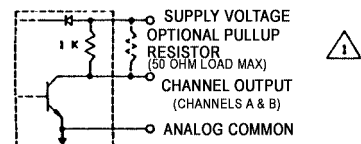
Available for 56C and 140TC motors. Dual channel quadrature design measures both motor speed and direction.



Electrical Connections



Output Channel Waveforms



Output Channel Schematic (Channels A & B)

Specifications

Sensor Type	Bidirectional shaft speed sensor
Pulse Per Revolution	60 cycles each channel
Supply Voltage	+12 Volts DC +/-5%
Supply Current	60 mA typical (115 mA maximum)
Output Drive Capability	250 mA per channel continuous
Maximum Load	50 ohms per channel

To obtain a SuperCylinder with a ring kit encoder specify ring kit encoder at time of order.